

# Lima Beans

Written by New Castle County Master Gardeners Rick Judd and Gail Hermenaus

October 2024

## General Information

- Phaseolus lunatus, Lima Bean
- Fabaceae family
- Sunlight: full sun.
- Soil conditions: loose, evenly moist, well drained soil.
- Bush and pole varieties.

*Lima Beans photos courtesy of Gail Hermenaus.*



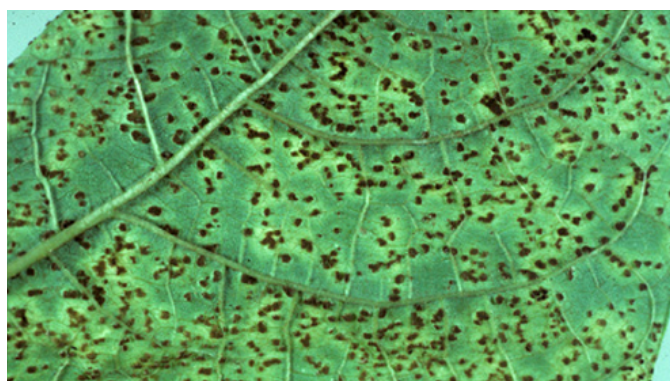
## Successful Cultivators

- Fordhook 242 (65 days) Bush type. Light green 4" pods, packed with 3-5 large beans.
- King of the Garden (105 days) Pole type. Can grow 12 ft., use sturdy support.
- Henderson bush (60-75 days) Bush type. Dwarf lima, very productive.



## Common Pests and Diseases

- Leaf Spot Disease
- Bean Anthracnose
- Bean Rust
- Bean Root Rot
- Bean Blight



*This information is brought to you by the University of Delaware Cooperative Extension, a service of the UD College of Agriculture and Natural Resources — a land-grant institution. This institution is an equal opportunity provider.*