

# Cilantro

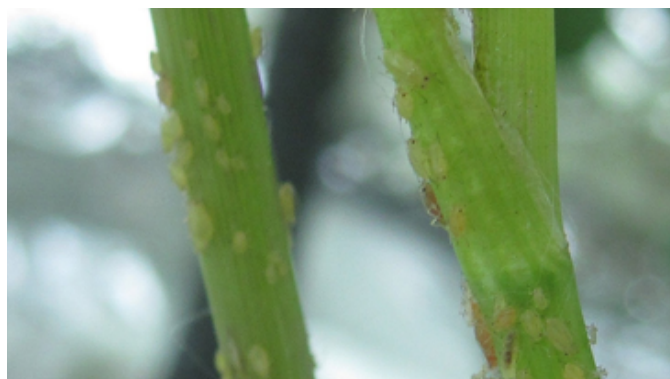
Written by New Castle County Master Gardeners Rick Judd and Gail Hermenaus

October 2024

## General Information

- *Coriandrum sativum*, Cilantro
- Apiaceae family
- Sunlight: full to part sun.
- Soil conditions: loamy, well-drained soil.
- Cilantro (leaves) Coriander (seeds)
- Grows well in a container.
- Annual

*Cilantro photos courtesy of Gail Hermenaus.*



## Successful Cultivators

- Common (50-55 days) Earthy, bright flavor. (Pictured here)
- Calypso (50-55 days) Full, bulky plants, slow to bolt.
- Cruiser (50-55 days) Tidy, upright habit, slow to bolt.

## Common Pests and Diseases

- Powdery Mildew
- Bacterial Leaf Spot
- Aphids (pictured here)
- Cut Worm
- Army Worm

*This information is brought to you by the University of Delaware Cooperative Extension, a service of the UD College of Agriculture and Natural Resources — a land-grant institution. This institution is an equal opportunity provider.*